

ZoomWare Quick Start Guide



Welcome to ZoomWare 1.0

ZoomWare is an affordable and easy to use magnification program for your computer.

ZoomWare provides a gentle boost of magnification (up to 2 times) so that hard to read text is larger, clearer and easier to see. With the versatile features of ZoomWare, you can now enjoy using your computer with the comfort and ease that you deserve.

About this Quick Start Guide and the ZoomWare Help System

This ZoomWare quick start guide provides basic information to help you install and start using ZoomWare. For complete information, refer to the ZoomWare help system. To launch the help system, choose **H**elp in the ZoomWare menu.

Note: Technical and troubleshooting information is also available online at www.GetZoomWare.com/Support. From this webpage you can also email ZoomWare support technicians for assistance.

System Requirements

The following hardware and software is required to run ZoomWare:

- 1 GHz Pentium® 4 processor or equivalent
1.5 GHz for Windows Vista
- Windows Vista (32 bit) or XP (SP2) operating system
- Minimum 512 MB RAM for Windows XP
Minimum 1 GB RAM for Windows Vista

Installing ZoomWare

When you insert the ZoomWare CD into your computer, or click on a downloaded installation file, the ZoomWare Setup program will automatically start. Follow the on-screen instructions to complete the ZoomWare installation.

► If Setup does not start automatically

1. Click on the Windows **Start** button and select **Run...**
2. Browse to your CD-ROM drive.
3. Select the Setup program and click **Open**.
4. Click **OK** in the **Run** dialog box.

Starting ZoomWare

Once ZoomWare has been successfully installed on your system, it can be started in one of the following ways:

- On the Windows desktop, double-click the **ZoomWare 1.0** program icon.
- In the Windows **Start** menu, choose **Programs ► ZoomWare 1.0 ► ZoomWare 1.0**.

When ZoomWare starts up, it changes your display to show a magnified view of the normal screen. As you move the mouse, type text and navigate within your applications, the magnified view automatically scrolls, keeping area of activity in view. The ZoomWare user interface also appears on the screen.



The ZoomWare User Interface

Activating ZoomWare

Product activation is a simple, straightforward process that takes just a few seconds to complete when performed over the Internet. Once you have installed the software, you can activate immediately or at anytime.

Preparing to Activate ZoomWare

To activate ZoomWare 1.0 you will need your ZoomWare 1.0 serial number provided with your purchased copy. This serial number can be found on the sticker in the bottom, right-hand corner of the back of your ZoomWare DVD case. If you purchased your ZoomWare product from Ai Squared's online store, your product serial number will be included in your purchase confirmation email and located on your receipt.

While using ZoomWare as a trial, the Activation Wizard will appear each time you start the program. The wizard presents the following options for you to choose from:

- **Option 1: I have a serial number and want to activate**
- **Option 2: I want to purchase ZoomWare**
- **Option 3: I want to try ZoomWare**

For complete information on activating ZoomWare, see “Activating ZoomWare 1.0” in the ZoomWare Help System.

toggling ZoomWare On and Off

You can toggle ZoomWare on and off at any time without exiting the program. When toggled off, ZoomWare returns the screen to its normal (unmagnified) state.

► To toggle ZoomWare on and off

- On the ZoomWare User Interface, click the ZoomWare On/Off button.
- Press the Toggle ZoomWare On/Off hotkey: **Alt + Insert**



Zooming In and Out

ZoomWare offers four levels of magnification: 1.25x, 1.5x, 1.75x and 2x. You can quickly zoom in and out by clicking on the corresponding magnification buttons. The Zoom In button (icon with the larger 'Z') increases the magnification. The Zoom Out button (icon with the smaller 'z') decreases magnification. Each button will turn gray when you reach full or no magnification.

► To increase magnification

Do one of the following:

- Click on the Zoom In button.
- Press the Zoom In hotkey: **Alt + Page Up**



► To decrease magnification

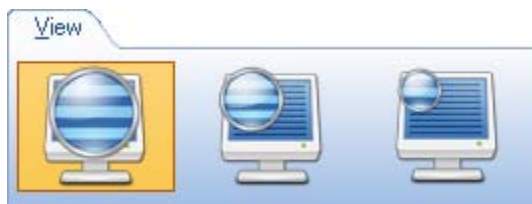
Do one of the following:

- Click on the Zoom Out button.
- Press the Zoom Out hotkey: **Alt + Page Down**



Magnified Views

ZoomWare offers three magnified views: Full View, Large Lens and Small Lens. Full view magnifies the entire screen, while the Large Lens and Small Lens act like a magnifying glass that you can move around the screen. These choices are located on the View tab.

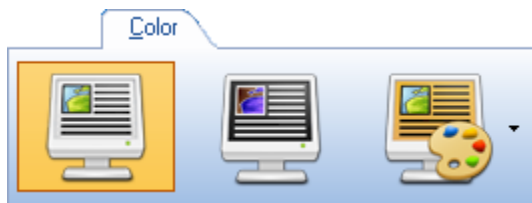


► To access the View settings

- On the ZoomWare user interface, click on the **View** tab.

Color Enhancements

Color enhancements eliminate screen glare, providing more comfortable viewing and reduced eyestrain. You can choose between Reverse Video and a wide range of tinting colors. These settings are located on the Color tab.

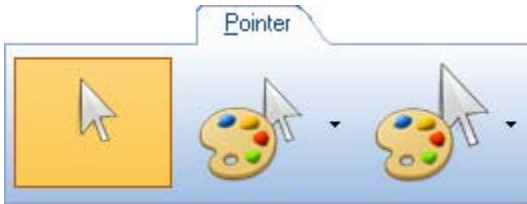


► To access the Color Enhancement options

- On the ZoomWare user interface, click on the **Color** tab.

Pointer Enhancements

Pointer enhancements make it easy to see and follow the mouse pointer. You can choose between small and large pointer sizes and a variety of high-contrast colors. These settings are located on the Mouse tab.



► To access the Pointer Enhancement options

- On the ZoomWare user interface, cluck on the **Pointer** tab.

Cursor Enhancements

Cursor enhancements make it easy to see and follow the text cursor. You can choose between the normal cursor and the enhanced cursor. When choosing the enhanced cursor, colorful triangles appear above and below the cursor, making its position more visible. These settings are located on the Cursor tab.



► To access the Cursor Enhancement options

- On the ZoomWare user interface, click on the **Cursor** tab.