



ZoomText EXPRESS

Magnification and screen enhancement software for eyestrain relief

Quick Start Guide

Welcome to ZoomText Express

ZoomText Express is an affordable and easy to use magnification programme for your computer.

ZoomText Express provides a gentle boost of magnification (up to 2 times)

so that hard to read text is larger, clearer and easier to see. With the versatile features of ZoomText Express, you can now enjoy using your computer with the comfort and ease that you deserve.



About this Quick Start Guide and the Help System

This ZoomText Express quick start guide provides basic information to help you install and start using ZoomText Express. For complete information, refer to the ZoomText Express help system. To launch the help system, choose **Help** in the ZoomText Express menu.

Note: Technical and troubleshooting information is also available online at www.ZoomTextExpress.com/Support. From this webpage you can also email ZoomText Express support technicians for assistance.

System Requirements

The following hardware and software is required to run ZoomText Express:

- 1 GHz Pentium® 4 processor or equivalent
1.5 GHz for Windows Vista and Windows 7
- One of the following operating systems:
 - Windows 7
 - Windows Vista
 - Windows XP (32 bit) with Service Pack 2
- Minimum 512 MB RAM for Windows XP
Minimum 1 GB RAM for Windows Vista and Windows 7

Installing ZoomText Express

When you insert the ZoomText Express CD into your computer, or click on a downloaded installation file, the ZoomText Express Setup programme will automatically start. Follow the on-screen instructions to complete the ZoomText Express installation.

► If Setup does not start automatically

1. Click on the Windows **Start** button and select **Run...**
 2. Browse to your CD-ROM drive.
 3. Select the Setup programme and click **Open**.
 4. Click **OK** in the **Run** dialogue box.
-

Starting ZoomText Express

Once ZoomText Express has been successfully installed on your system, it can be started in one of the following ways:

- On the Windows desktop, double-click the **ZoomText Express 1.0** programme icon.
- In the Windows **Start** menu, choose **Programmes ► ZoomText Express 1.0 ► ZoomText Express 1.0**.

When ZoomText Express starts up, it changes your display to show a magnified view of the normal screen. As you move the mouse, type text and navigate within your applications, the magnified view automatically scrolls, keeping the area of activity in view. The ZoomText Express user interface also appears on the screen.



The ZoomText Express User Interface

Activating ZoomText Express

Product activation is a simple, straightforward process that takes just a few seconds to complete when performed over the Internet. Once you have installed the software, you can activate immediately or at anytime.

Preparing to Activate ZoomText Express

To activate ZoomText Express 1.0 you will need your ZoomText Express 1.0 serial number provided with your purchased copy. This serial number can be found on the sticker in the bottom, right-hand corner of the back of your ZoomText Express DVD case. If you purchased your ZoomText Express product from Ai Squared's online store, your product serial number will be included in your purchase confirmation email and located on your receipt.

While using ZoomText Express as a trial, the Activation Wizard will appear each time you start the programme. The wizard presents the following options for you to choose from:

- **Option 1: I have a serial number and want to activate**
- **Option 2: I want to purchase ZoomText Express**
- **Option 3: I want to try ZoomText Express**

For complete information on activating ZoomText Express, see “Activating ZoomText Express 1.0” in the ZoomText Express Help System.

Toggling ZoomText Express On and Off

You can toggle ZoomText Express on and off at any time without exiting the programme. When toggled off, ZoomText Express returns the screen to its normal (unmagnified) state.

► To toggle ZoomText Express on and off

- On the ZoomText Express User Interface, click the ZoomText Express On/Off button.
- Press the Toggle ZoomText Express On/Off hotkey: **Alt + Delete**.



Zooming In and Out

ZoomText Express offers four levels of magnification: 1.25x, 1.5x, 1.75x and 2x. You can quickly zoom in and out by clicking on the corresponding magnification buttons. The Zoom In button increases the magnification. The Zoom Out button decreases magnification. Each button will turn grey when you reach full or no magnification.

► To increase magnification

Do one of the following:

- Click on the Zoom In button.
- Press the Zoom In hotkey: **Alt + Page Up**.



► To decrease magnification

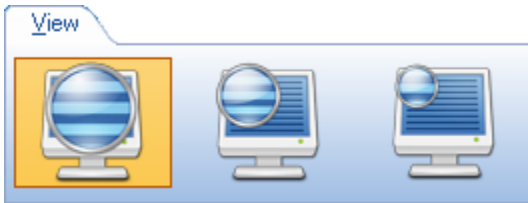
Do one of the following:

- Click on the Zoom Out button.
- Press the Zoom Out hotkey: **Alt + Page Down**.



Magnified Views

ZoomText Express offers three magnified views: Full View, Large Lens and Small Lens. Full view magnifies the entire screen, while the Large Lens and Small Lens act like a magnifying glass that you can move around the screen. These choices are located on the View tab.



► To access the View settings

- On the ZoomText Express user interface, click on the **View** tab.



Full View

Selects the full magnified view.



Large Lens

Selects the large lens view.

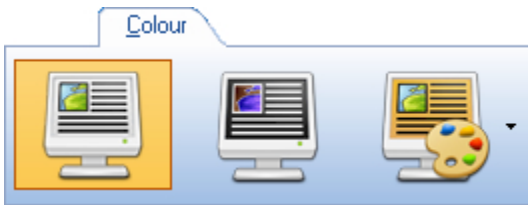


Small Lens

Selects the small lens view.

Colour Enhancements

Colour enhancements eliminate screen glare, providing more comfortable viewing and reduced eyestrain. You can choose between Reverse Video and a wide range of tinting colours. These settings are located on the Colour tab.



► To access the Colour Enhancement options

- On the ZoomText Express user interface, click on the **Colour** tab.



Normal

Displays the normal screen colours.



Reverse Video

Reverses all colours on the screen.

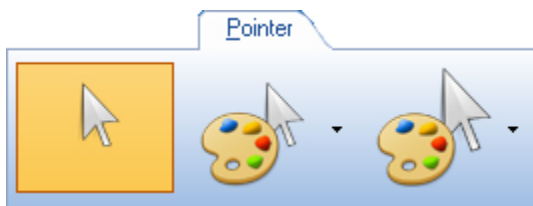


Tint

Applies a soft tint to white areas of the screen.

Pointer Enhancements

Pointer enhancements make it easy to see and follow the mouse pointer. You can choose between small and large pointer sizes and a variety of high-contrast colours. These settings are located on the Pointer tab.



► To access the Pointer Enhancement options

- On the ZoomText Express user interface, click on the **Pointer** tab.



Normal

Displays the normal mouse pointer.



Small Colorful Pointer

Displays a normal sized mouse pointer in a selected color.



Large Colorful Pointer

Displays a large mouse pointer in a selected color.

Cursor Enhancements

Cursor enhancements make it easy to see and follow the text cursor. You can choose between the normal cursor and the enhanced cursor. When choosing the enhanced cursor, colourful triangles appear above and below the cursor, making its position more visible. These settings are located on the Cursor tab.



► To access the Cursor Enhancement options

- On the ZoomText Express user interface, click on the **C**ursor tab.



Normal Cursor

Displays the normal cursor (without enhancements).



Enhanced Cursor

Colored triangles appear above and below the text cursor.



Cursor Preview

Displays a preview of the currently selected cursor enhancement option.